

600F

DC-DC Power Converter

(Document Rev A01, 10/8/18)



**High Voltage Balanced 600Vdc Input Nominal
Single +28Vdc Output, 3600W Max
Less watts available. Can be paralleled for more power.**

Market: Military, Industrial

Application: High Voltage Electric Vehicle

Features

- High Voltage Balanced DC Input.
- CanBus communication available.
- Designed to meet portions of Mil-Std-810F environmental specs.*
- Designed to meet portions of Mil-Std-461F EMI specifications.*
- Ruggedized IP67 rated enclosure.

* Contact AEGIS Power Systems for specific details.

Table 1: Maximum Ratings

Parameter	Rating	Unit	Notes
Vin max range	500-850	Vdc	+ and - Balanced to Chassis
Temperature range	-40 to +65	°C	
Liquid Cooling	2.5	LPM	Nominal Flow
Output power	3600	W	
Input power	4170	W	
+28Vdc output	3600	W	

Product Highlights

This extremely robust IP67 rated dc-dc converter has a filtered high voltage 600Vdc input with a single high power output of +28Vdc capable of 3.6KW. This COTS solution works well for Mil-cots and Industrial applications for electric vehicles such as buses, trucks, and other ground or water utility electric vehicles.

AEGIS Power Systems, Inc. specializes in the front end design, development, and manufacture of Rapid Response Custom Switching Power Supplies for defense, industrial, telecom, aircraft, shipboard, rack mount, electric powered vehicle, and Mil-Cots military power supply applications.

Contact Aegis for specific details on what portions of a particular military standard is offered for this power supply or what can be done for your particular military power supply application.

Specifications: (25°C, nominal line, 100% load unless otherwise specified).

DC Input Voltage: Balanced 600Vdc line to line
± 300Vdc with respect to Chassis.
565Vdc-635Vdc Normal. 500Vdc-850Vdc maximum range.
15mSec Normal transient, See Figure 2.

DC Input Current: 7Amps Typical @ 600Vdc.

Input Power: 4170W Typical.

Efficiency: 86% Typical.

Startup Time: 700mS Maximum.

Output Voltage: +28Vdc, set at factory.

Output Power: 3600W Max @ +28Vdc Output.

Output Current: 129A Max @ +28Vdc Output.

Current Sharing: Power Converters can be connected in parallel for higher current capability.

Over Voltage Protection: Output Voltage typical 115%. Recycle input power to reset (1 minute off).

Temperature Regulation: ± 0.02% per degree C.

Set Point: ±2.5%, 0-100% Load.

Line/Load Regulation: ±2.5%, 0-100% Load.

Output Ripple: 1.5% of Vout Pk-Pk (20Mhz BW).

Current Limit: Short Circuit Protected, Auto Restart.

Temperature: -40°C to +65°C Operating at base plate with 60°C coolant temp @ 2.5 LPM flow,
-40°C to +100°C Non-Operating.
Over Temp Thermal Shutdown 90°C +/-2°C on base plate, automatic recovery.

Cooling: Aluminum Liquid Cooled Base Plate, ¼" Threaded Inlet/outlet Fittings with ¼"
Aluminum Hose Barbs.

Size: 7" W, 3.0" H, 16.0" L (18.0" L with Connectors and Fittings.)(See Drawing.)

Weight: 19 lb Typical.

Environmental: IP67 Metal Enclosure and Connectors.

Connector: Input Connector: 8 pin IP67 Mil-C-26482 circular bayonet.

Output Connections: Bolt thru Terminal Lugs with 3/8-16" Threads.

Shock: Designed to meet Mil-Std-810F, Method 516.5, Procedure I.

Vibration: Designed to meet Mil-Std-810F, Method 514.5, Procedure I.

Humidity: 0-95% Non-condensing.

EMI: Designed to meet MIL-STD-461F CE102, CS101 Electro-Magnetic Interference.

Communication Option: J1939 compatible CanBus, ISO11898, CAN 2.0B, 29 Bit Identifier
(125Khz, 250Khz, or 500kHz Can Bus rates available).

Contact Aegis Power Systems with your exact requirements for a Part Number designation.

Specifications subject to change without notice.

Figure 1: Input Wiring Diagram

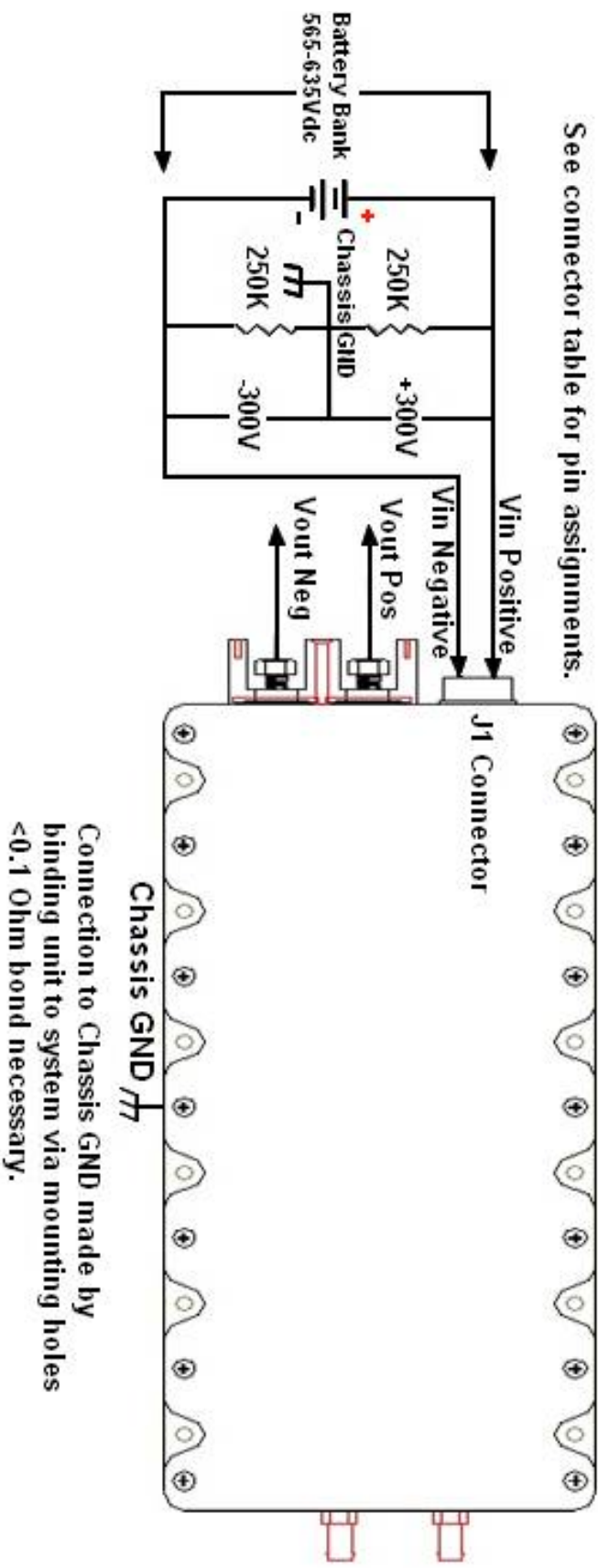
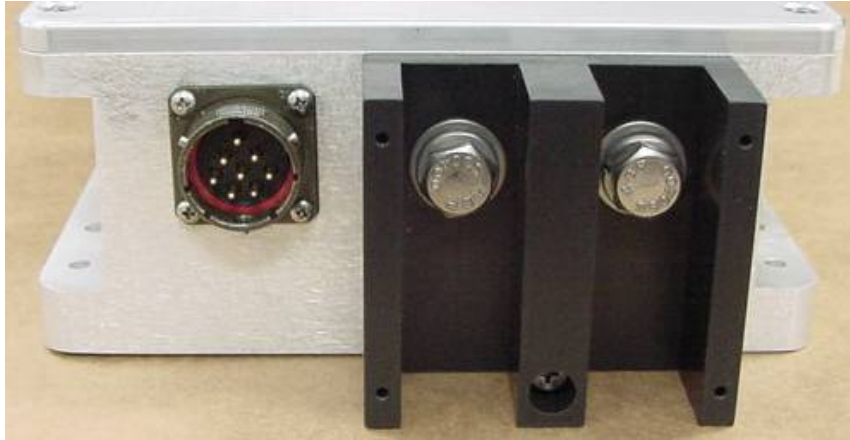


Table 2: Connector Information



**Front View
of
Power Supply**

**Circular
Input Connector**
(MIL-C-26482 Series 1)

**Two 3/8" Stud
Output Connector**
(IP67 Rated)

Input Connector: (MIL-C-26482 Series 1)

Pin #	Signal
A	Vin POS VDC
B	Vin POS VDC
C	Vin NEG VDC
D	Vin NEG VDC
E	CANBUS LOW
F	CANBUS HIGH
G ⁽¹⁾	IGNITION VOLTAGE IN (+8 to +35VDC) (Alternate Power Source for the Canbus)
H ⁽²⁾	IGNITION VOLTAGE RETURN



P/N AB0521001608PN00

**Customer Mate P/N's
Connector:**

AB0561001608SN00

Cable Clamp:

AB050027083300

Output Studs:
(IP67 Rated)
(NexTek Threaded Feed-Thru)

Stud	Signal
Red	Positive Output
Black	Negative Output



P/N HPR-CO23



P/N HPR-CO22

- (1) **Canbus** is powered internally from the power converter's output bus.
 If the power converter output is inhibited, the Canbus powers off.
 Canbus power can be maintained with an alternate source connected to Pin G and H.
 Canbus power can also be maintained with the attachment of a battery to the Power converter's output terminals.
- (2) **Note: Pin H is common to Negative Output (Black Output Stud).**

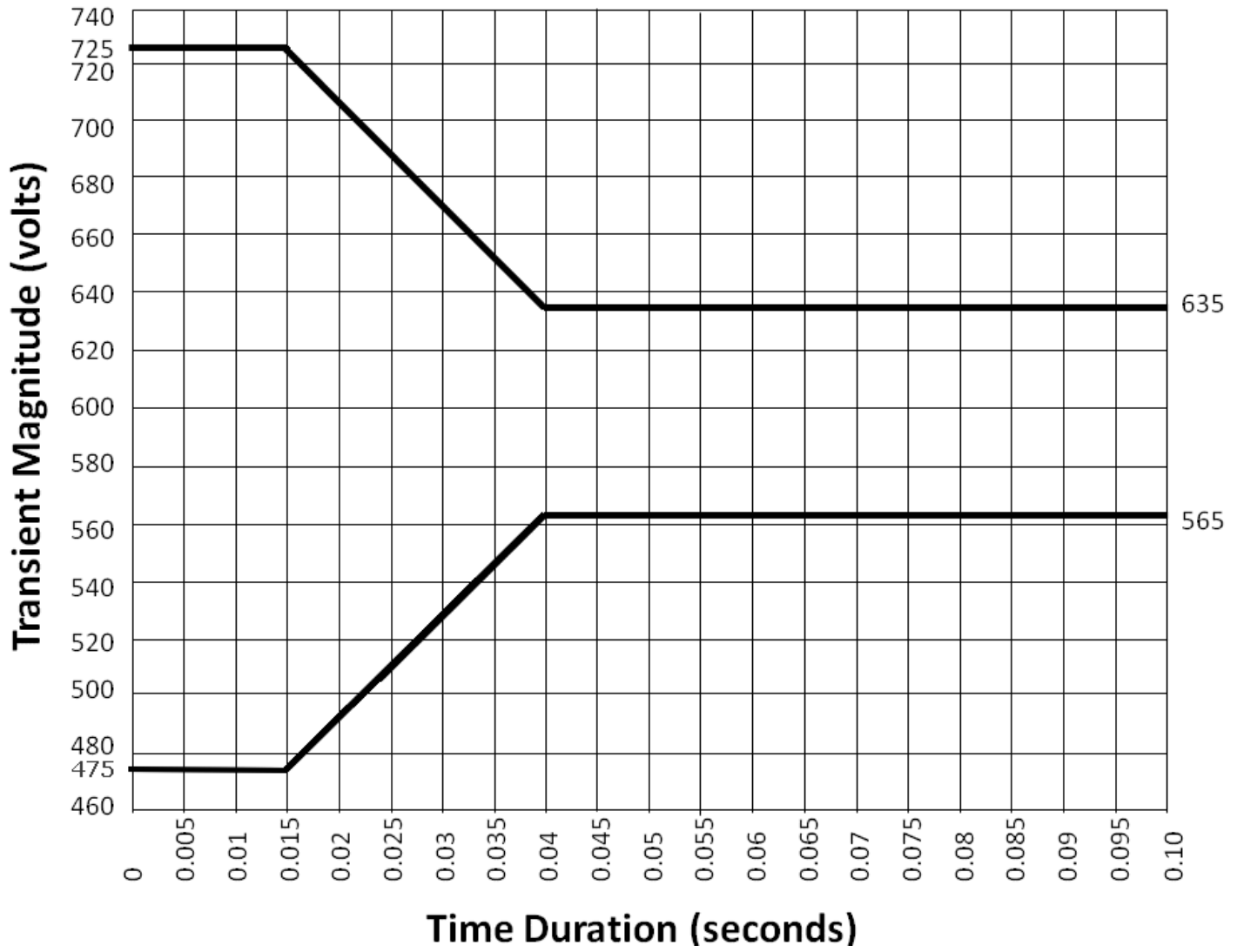
600F Power Converter Electrical Information:

Table 3: Electrical Characteristic for 600V System

Steady-State Voltage	565-635V (600V +/- 35V)
Normal Transients	500-850V (See Figure 2)*
Ripple Amplitude	9V

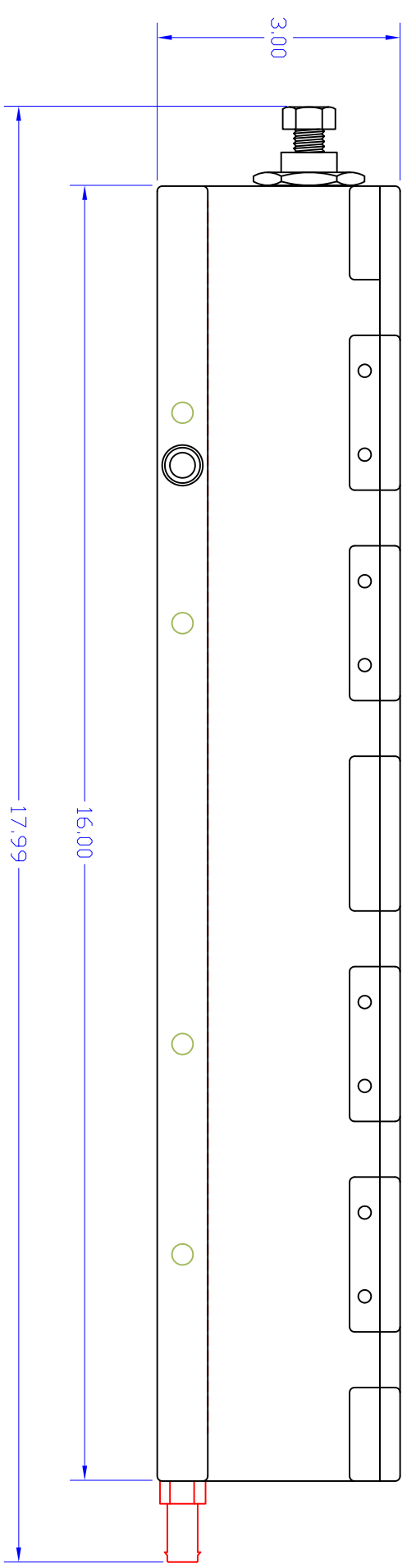
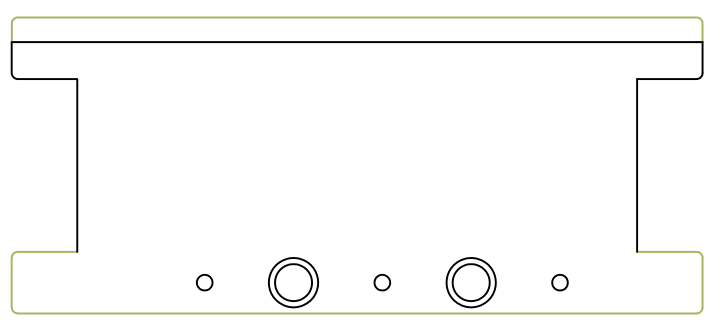
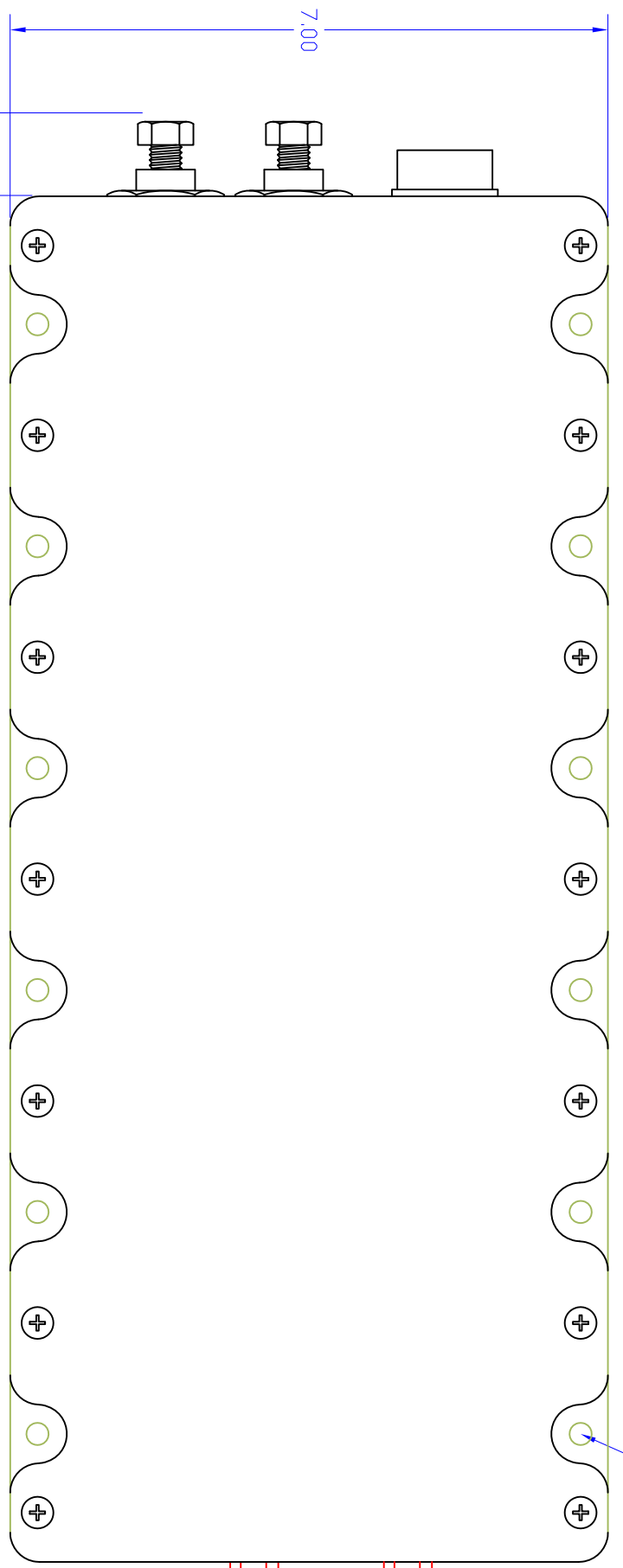
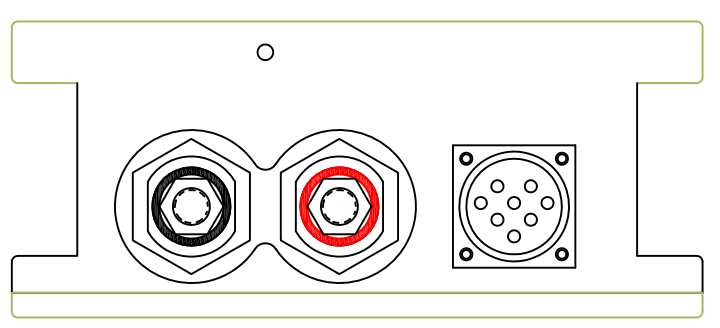
* **Note: Unit will not operate at 475V**

Figure 2: NORMAL TRANSIENTS



NOTES: UNLESS OTHERWISE SPECIFIED
 1. INTERPRET DIMENSIONS AND TOLERANCES PER ANSI Y14.5M-1994.
 2. MATERIAL:
 3. FINISH:

ZONE	REV	DESCRIPTION	DATE	APPROVED
A01	INITIAL RELEASE	xxx	5/7/12	MVM
A02	Remove water port (top)		5/7/12	MVM
A03	PRODUCTION DRAWING		5/22/12	MVM



12X, Ø.250" THRU, (MOUNTING HOLES)

1/4" HOSE BARB, 2X

CAD MAINTAINED. CHANGES SHALL BE INCORPORATED BY THE DESIGN ACTIVITY

AEGIS POWER SYSTEMS, INC. PROPRIETARY INFORMATION. NO DISCLOSURE, REPRODUCTION, OR USE OF ANY PART HEREOF MAY BE MADE EXCEPT BY EXPRESS WRITTEN PERMISSION OF AEGIS POWER SYSTEMS, INC.

UNLESS OTHERWISE SPECIFIED, DIMENSIONS IN INCHES FRACTIONS DECIMALS ANGLES DEGREES		CONTRACT NO.	
* N/A	.xx ± .02	* N/A	
	.xxx ± .005		
SEE NOTE 2		APPROVALS	DATE
SEE NOTE 3		MVM	4/26/12
DO NOT SCALE DRAWING		CHECKED	TITLE
		PROJ. ENG.	600E3700 MECHANICAL OUTLINE
		WFG	AEGIS P/N: 600E3700
		QUALITY	MURPHY, NORTH CAROLINA
SIZE	FDSM NO.	DWG NO.	REV
D	06ES8	600E3700-M00	A03
SCALE	1/1	SHEET	1 OF 1

A

B

C

D

A

B

C

D