

1PH604A 115/220VAC 1phase, 47-63Hz 375W Power Card 4 Outputs

6U x 160mm x 8hp (1.6") VME

Rev. A02

Date: 7/12/10

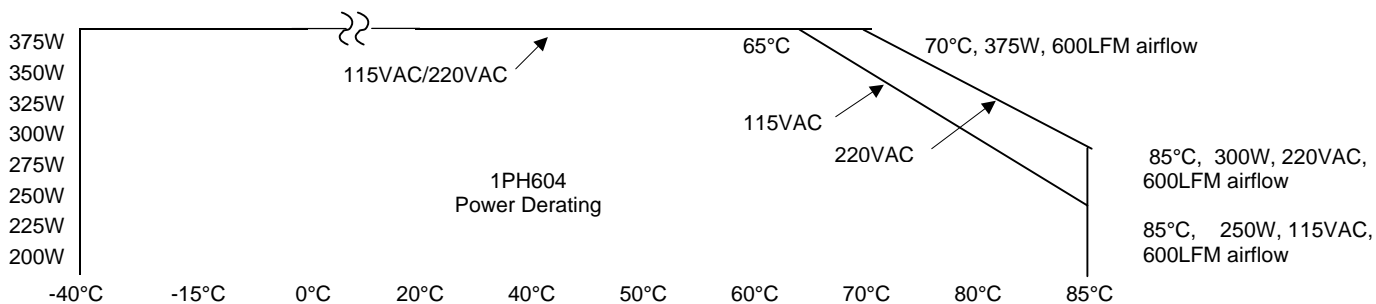
(25°C, nominal line, 100% load unless otherwise specified)



<u>AC Input Voltage:</u>	Normal 95VAC to 250VAC, 47Hz to 63Hz Transient 70VAC to 270VAC, 100 msec Mil-Std-704F Normal and abnormal range Mil-Std-1399 Section 300A/B Type 1 60Hz
<u>AC Input Line Current:</u>	4.1A @ 115VAC, 2.1A@220VAC
<u>Input Power:</u>	455W@ 115VAC, 450W@220VAC , typical
<u>Power Factor:</u>	0.99 typical 47-63Hz
<u>Input Frequency:</u>	47-63Hz
<u>Output Power:</u>	375W Max. All outputs combined
<u>Holdup Time:</u>	10 msec typical
<u>Output Voltages:</u>	See Table 1
<u>Efficiency:</u>	83%/115VAC, 86%/220VAC typical. full load
<u>Startup Time:</u>	500 millisecond Max.
<u>Voltage Setpoint, Line/Load Regulation:</u>	+/- 2.5% (any combination)
<u>Current Limit:</u>	Short Circuit protected, automatic recovery
<u>Temperature Regulation:</u>	+/-0.01%/deg C
<u>Output Voltage Ripple:</u>	1% Vout, except 3.3Vout is 1.52% (pk-pk 20 MHz BW limit)

1PH604A 115/220VAC 1phase, 47-63Hz 375W Power Card

Power Derating for Temperature and Input Voltage per below Graph



Forced Air Cooling 600LFM

Size: 6U x 160mm x 5hp(1") see mech dwg

Weight: 4 lb. typical

Connector: Positronic, PCIM30W15M400A1

Vibration: MIL-STD-810F, Method 514.5, Procedure 1

Shock: MIL-STD-810F, Method 516.5, Procedure 1

Humidity: 0-95% non-condensing

EMI: Mil-Std-461E, CE102, CS101

Table 1

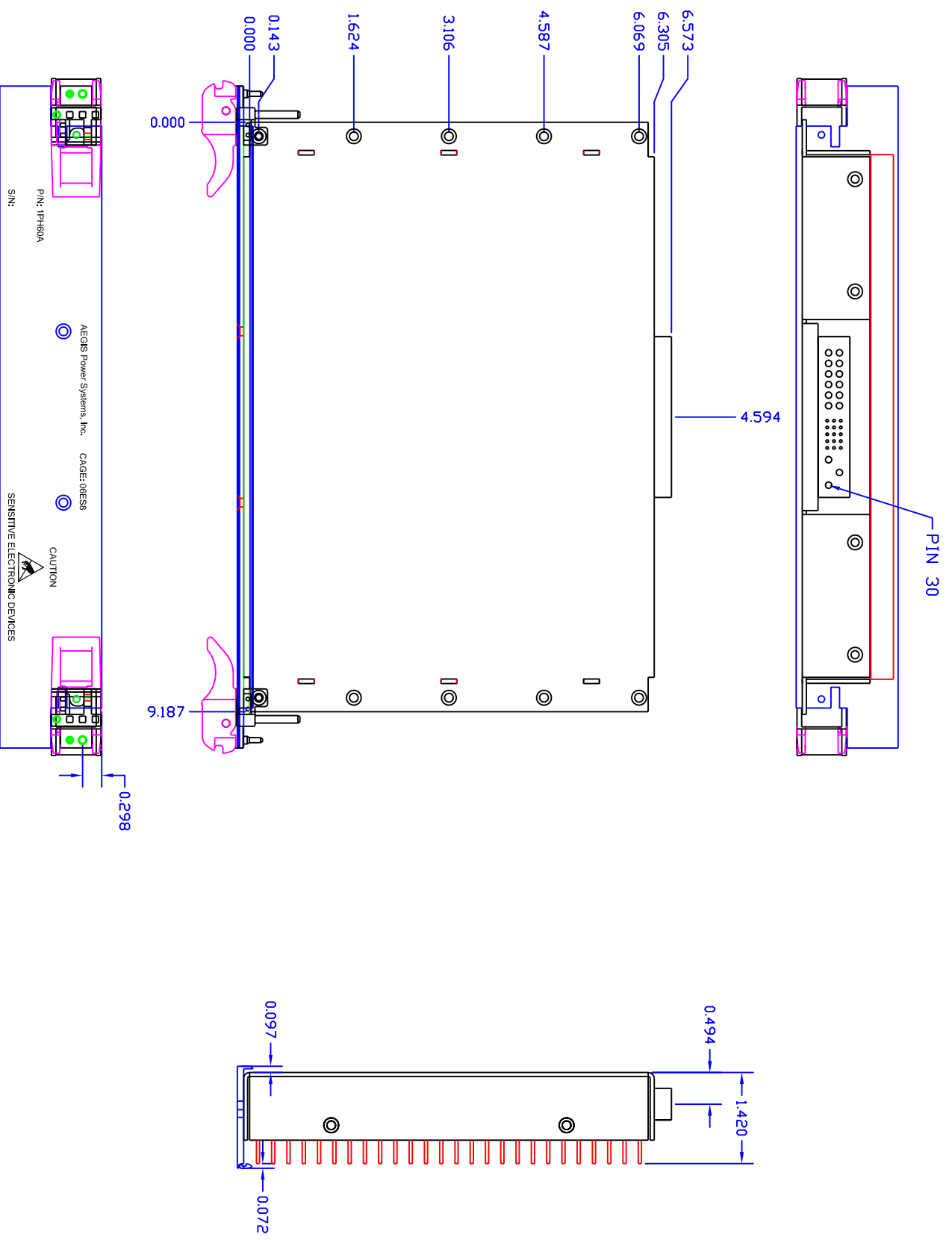
Part Order Number	# Out	Output V1	Output V2	Output V3	Output V4	Max Power
1PH604A-001	4	+5VDC 200W	+3.3VDC 150W	+12VDC 60W	-12VDC 12W	375W 70°C
1PH604A-002	3	+5VDC 200W	+12VDC 125W	+3.3VDC 50W		375W 70°C

REVISONS		DATE	APPROVED
ZONE	REV	DESCRIPTION	
A01	INITIAL RELEASE	09/24/09	NVM
A02	REV A02 BASEPLATE	09/30/09	NVM
A03	MOVED WEDGE LOCATION	10/06/09	NVM
A04	EDIT J1:14, J1:22, J1:23	12/08/09	NVM

CAD MAINTAINED. CHANGES SHALL BE INCORPORATED BY THE DESIGN ACTIVITY

NOTES: UNLESS OTHERWISE SPECIFIED

1. TYPE 1, 6U PLUG-IN UNIT - PRIMARY SIDE RETAINER. 100 INCH PITCH.
 2. CONNECTOR POSITIONING PCIM30V15M400A1
 3. PIN1-12 = 28AMP RATING, PIN13-27 = 3AMP RATING, PIN28,29 AND 30 = 40AMP RATING
- J1:1 - V1 RETURN
 - J1:2 - V2 RETURN
 - J1:3 - V1 RETURN
 - J1:4 - V2 RETURN
 - J1:5 - V1 RETURN
 - J1:6 - V3 RETURN
 - J1:7 - V1 +OUT
 - J1:8 - V2 +OUT
 - J1:9 - V1 +OUT
 - J1:10 - V2 +OUT
 - J1:11 - V1 +OUT
 - J1:12 - V3 +OUT
 - J1:13 - V4 +OUT
 - J1:14 - V1 +SENSE
 - J1:15 - V1 SHARE-
 - J1:16 - V1 SHARE+
 - J1:17 - V1 SHARE-
 - J1:18 - V1 SENSE
 - J1:19 - V3 SHARE+
 - J1:20 - V3 SHARE-
 - J1:21 - NC
 - J1:22 - NC
 - J1:23 - NC
 - J1:24 - V2 SHARE+
 - J1:25 - V2 SHARE-
 - J1:26 - V2 SENSE
 - J1:27 - V2 +SENSE
 - J1:28 - CHASSIS
 - J1:29 - NEUTRAL
 - J1:30 - LINE



AEGIS POWER SYSTEMS, INC. PROPRIETARY INFORMATION. NO DISCLOSURE, REPRODUCTION, OR USE OF ANY PART HEREOF MAY BE MADE EXCEPT BY EXPRESS WRITTEN PERMISSION OF AEGIS POWER SYSTEMS, INC.

AEGIS POWER SYSTEMS
MURPHY, NORTH CAROLINA

APPROVALS	DATE	TITLE
DESIGNED	06/16/09	VME SINGLE PHASE PFC 375W
CHECKED		MECHANICAL LAYOUT
PROJ. ENG.		AEGIS P/N: 1PH604A
WFG		
QUALITY		

UNLESS OTHERWISE SPECIFIED, DIMENSIONS ARE IN INCHES FRACTIONS DECIMALS ANG. DEGREES	CONTRACT NO.
* N/A	
xxx ± .02	
* .5	
MATERIAL	SEE NOTE 2
FINISH	SEE NOTE 3
NEXT ASSY	USED DN
APPLICATION	DO NOT SCALE DRAWING

SCALE	1/1
SHEET	1 OF 1
REV	A04
DWG NO.	1PH604A-M00
SIZE	D 06ES8