

Aegis Control Solution

P/N MC2402

**Rack Mounted
Multiple Output
Power System**



Rev A02

Industry MILCOTS, Industrial, & Telecommunications

Application Rack power for Mobile Satellite Communications Equipment

Summary This +24V Input Power System is Rack Mounted and has five (5) DC Volt Outputs.

Specifications (25°C, nominal input, 75% load unless otherwise specified.)

Input Voltage 24VDC Nominal, 20VDC-32VDC Range.

Input Current 50A Max, 100A Max Inrush, 1250W Max Input Power.

Outputs

- (1) +24VDC @ 25A, 600W Continuous.
- (2) +35VDC, 7A, 245W Continuous.
- (3) +16VDC, 4.5A, 72W Continuous.
- (4) +5VDC, 3A, 15W Continuous.
- (5) +3.3VDC, 5A, 16.5W Continuous.

Total Power 1000 Watts Max (1KW).

Dimensions 3.5"H (2U), 16.68"W (Adapters for 19"Rack), 18.0"L.

Weight 36 lb Max.

Package Enclosed Metallic Case.

Cooling Internal Forced Air Fans.

Temperature Range -40°C to +100°C Operating, -55°C to +125°C Non-Operating.

Other Features **Humidity:** 0-95% Non-Condensing.

Mounting: Rack Mounted Chassis, 2U 19".

Over Voltage Protection: 110-135%, Recycle input power to reset.

Over Current Protection: 105%-150%, Automatic restart.

Shock: 15G 11mSec half sine wave pulse, 3 shocks per axis.

Vibration: Random, 0.04G²/Hz 80-350 Hz.

Connectors: Input/Output, ITT Canon or Equivalent.

Compliance: EMI Compliant to FCC Class A, and Safety Compliant to UL1950.

Sensing: Remote Output Voltage Sensing.

Indicators: LED Output Power DC-OK Indicators.

MC2402

CONNECTOR PIN-OUT

INPUT CONNECTOR (CA3102E24-9PB-F80)

J1	
PIN NUMBER	SIGNAL NAME
A	+24V IN
B	+24V RETURN

OUTPUT CONNECTOR (CA3102E14S-7SB-F80)

J2	
PIN NUMBER	SIGNAL NAME
A	+24V OUT
B	GROUND
C	NO CONNECTION

OUTPUT CONNECTOR (CA3102E14S-7SB-F80)

J3	
PIN NUMBER	SIGNAL NAME
A	+24V OUT
B	GROUND
C	NO CONNECTION

OUTPUT CONNECTOR (CA3102E14S-7SB-F80)

J4	
PIN NUMBER	SIGNAL NAME
A	+24V OUT
B	GROUND
C	NO CONNECTION

OUTPUT CONNECTOR (CA3102E14S-7SB-F80)

J5	
PIN NUMBER	SIGNAL NAME
A	+24V OUT
B	GROUND
C	NO CONNECTION

MC2402

CONNECTOR PIN-OUT

OUTPUT CONNECTOR (CA3102E14S-2SB-F80)

J6	
PIN NUMBER	SIGNAL NAME
A	+35V OUT
B	GROUND
C	+35V OUT
D	GROUND

OUTPUT CONNECTOR (CA3102E14S-10SB-F80)

J7	
PIN NUMBER	SIGNAL NAME
A	+16V OUT
B	GROUND
C	+16V OUT
D	GROUND

OUTPUT CONNECTOR (CA3102E14S-10SB-F80)

J8	
PIN NUMBER	SIGNAL NAME
A	+16V OUT
B	GROUND
C	+16V OUT
D	GROUND

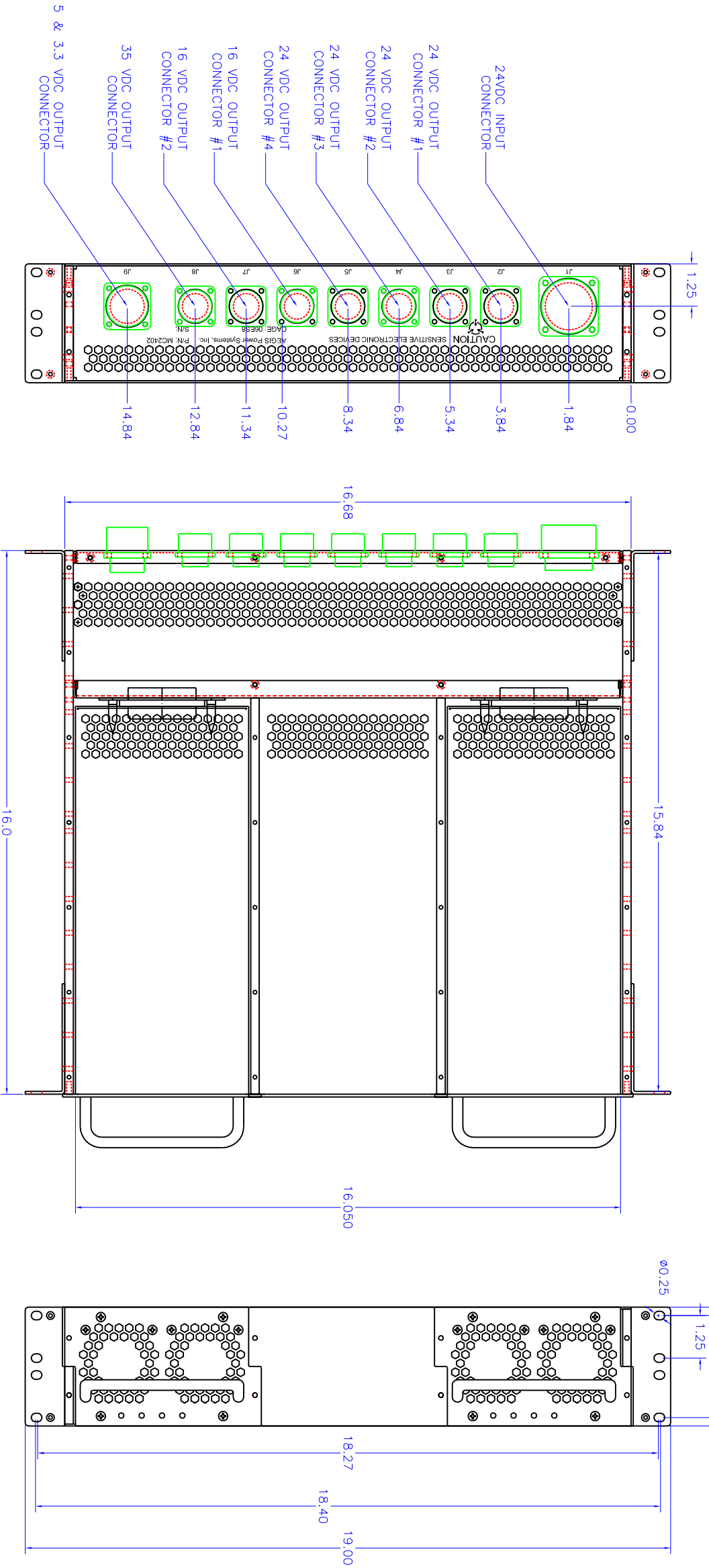
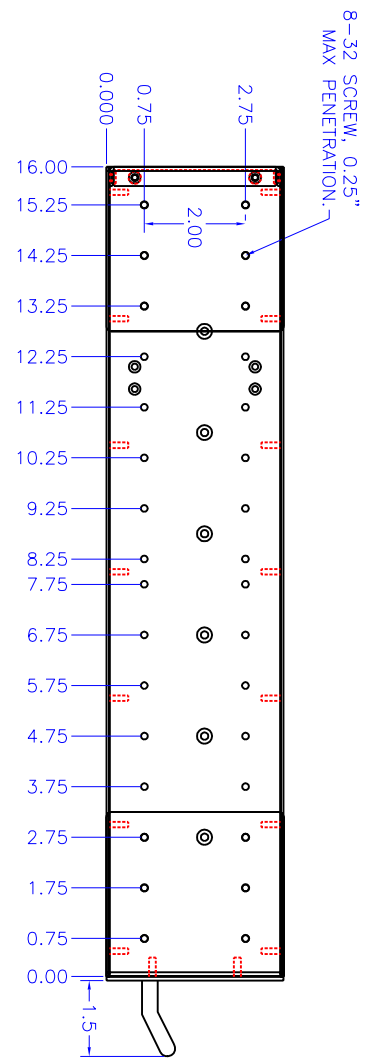
OUTPUT CONNECTOR (CA3102E18-1SB-F80)

J9	
PIN NUMBER	SIGNAL NAME
A	+5V OUT
B	+5V OUT
C	+5V SENS+
D	+5V SENSE-
E	GROUND
F	+3.3V OUT
G	+3.3V OUT
H	+3.3V SENSE+
I	+3.3V SENSE-
J	GROUND

ZONE	REV	DESCRIPTION	DATE	APPROVED
A01	INITIAL RELEASE	XXXXXX	XXX	

CAD MAINTAINED. CHANGES SHALL BE INCORPORATED BY THE DESIGN ACTIVITY.

NOTES: UNLESS OTHERWISE SPECIFIED
INTERPRET DIMENSIONS AND TOLERANCES PER ANSI Y14.5M-1994.



ZONE	REV	DESCRIPTION	DATE	APPROVED
A01	INITIAL RELEASE	XXXXXX	XXX	

CAD MAINTAINED. CHANGES SHALL BE INCORPORATED BY THE DESIGN ACTIVITY.

NOTES: UNLESS OTHERWISE SPECIFIED
INTERPRET DIMENSIONS AND TOLERANCES PER ANSI Y14.5M-1994.

UNLESS OTHERWISE SPECIFIED
DIMENSIONS IN INCHES
FRACTIONS DECIMALS ANGLES DEGREES
* N/A * .02 * .5
.XXX * .005

CONTRACT NO. _____

APPROVALS

DRAWN	J. SCHREIBER	DATE	01/27/05
CHECKED			
PROJ. ENG.			
WFG.			
QUALITY			

TITLE

CHASSIS MOUNTING INFO

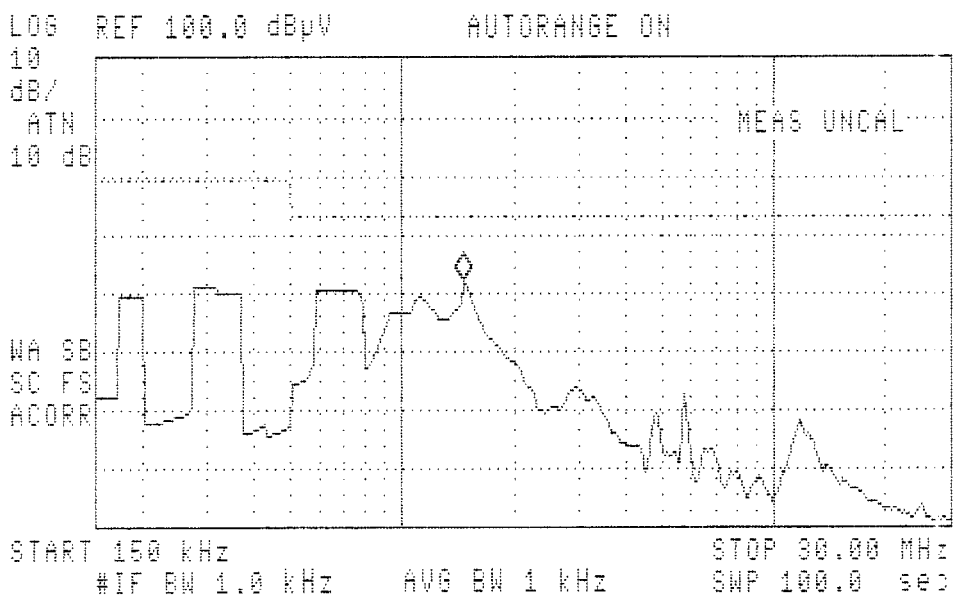
SIZE FSOM NO. D 06ES8 DWG NO. MC2402-M01 REV A01

SCALE 1/1 SHEET 1 OF 1

with Xantrex supply

15:47:21 MAR 04, 2005
F0CLA MC2402 24VDC 3/4/05 POS.

MARKER 1.47 MHz 61.72 dBuV
ACTV DET: QPD
MEAS DET: PEAK QP AVG
MKR 1.47 MHz
61.72 dBuV

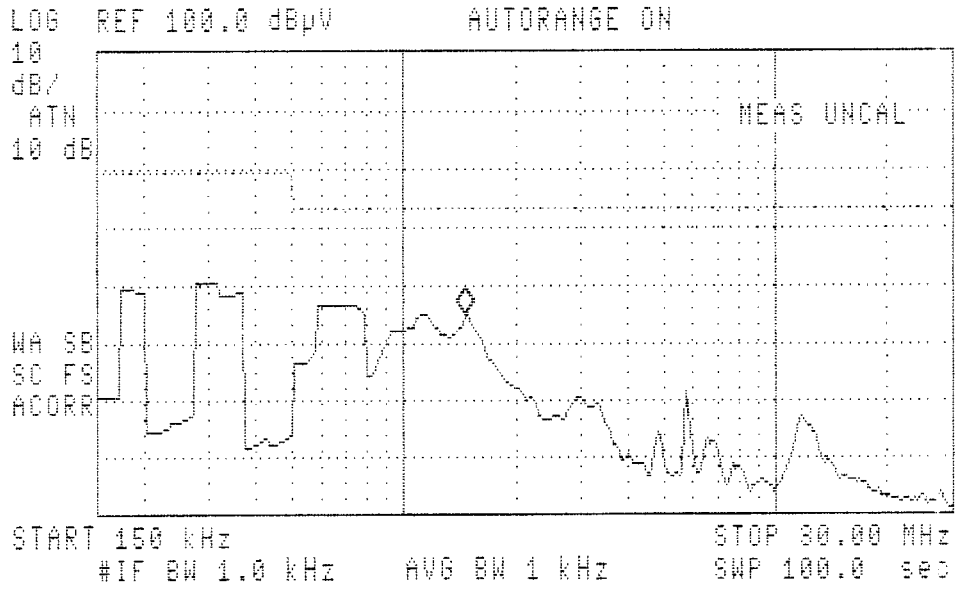


MARKER 1
MARKER AMPTD
SELECT 1 2 3 4
MARKER 1 ON OFF
More 1 of 3

15:50:20 MAR 04, 2005
F0CLA MC2402 24VDC 3/4/05 NEG.

PREFIX= RE102-
ACTV DET: QPD
MEAS DET: PEAK QP AVG
MKR 1.47 MHz
54.80 dBuV

ABCDEF
GHIJKL



MNOPQR
STUVWX
YZ_# Spc Clear
More 1 of 2